



Hospital Insurance

can pay benefits that help you with the costs of a covered hospital visit.

How does it work?

Hospital Insurance helps covered employees and their families cope with the financial impacts of a hospitalization. You can receive benefits when you're admitted to the hospital for a covered accident, illness, or childbirth. The money is paid directly to you – not to a hospital or care provider. The money can also help you pay the out-of-pocket expenses your medical plan may not cover, such as co-insurance, co-pays and deductibles.

What's included?

- \$2,000 for each covered hospital admission - once per year
- \$200 for each day of your covered hospital stay, up to 60 days - once per year
- \$200 for each day you spend in intensive care, up to 15 days - once per year

Why is this coverage so valuable?

- The benefits in this plan are compatible with a Health Savings Account (HSA).
- You may take the coverage with you if you leave the company or retire, without having to answer new health questions. You'll be billed directly.

Who can get coverage?

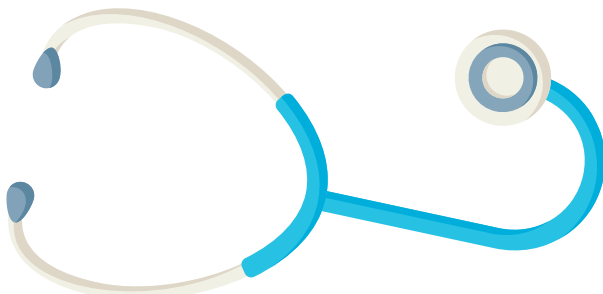
You	If you're actively at work
Your spouse	ages 17 and up
Your children	Dependent children until their 26th birthday, regardless of marital or student status

Employee must purchase coverage for themselves in order to purchase spouse or child coverage. Employees must be legally authorized to work in the United States and actively working at a U.S. location to receive coverage. Spouses and dependent children must reside in the United States to receive coverage.

How much does it cost?

Hospital Insurance monthly rates				
Age	Employee	Employee and spouse	Employee and child	Employee spouse and child
17+	\$34.09	\$72.05	\$46.29	\$84.25

For illustrative purposes only. Actual cost may vary. Coverage becomes effective on the first day of the month in which payroll deductions begin.



This plan has a Childbirth Limitation included. See the disclosures for more information.

Hospital Insurance

Hospital insurance filed policy name is Hospital Confinement Indemnity Group Insurance Policy

Exclusions and Limitations

Unum will not pay benefits for a claim that is caused by, contributed to by or occurs as a result of:

- Participating in war or act of war, whether declared or undeclared;
- Committing acts of terrorism;
- Treatment for alcoholism or drug addiction unless the insured individual is addicted to a narcotic taken on the advice of a physician;
- Treatment for dental care or dental procedures, unless treatment is the result of a covered accident;
- Elective procedures and/or cosmetic surgery or reconstructive surgery, unless it is as a result of trauma, infection or other diseases;
- Participating or attempting to participate in a felony or being engaged in an illegal occupation;
- Committing or trying to commit suicide or injuring oneself intentionally, whether sane or not;
- Hospital confinement caused by, contributed to by, or resulting from mental illness. However, dementia as a result of stroke, trauma, viral infection, Alzheimer's disease or other conditions not listed which are not usually treated by a mental health provider or other qualified provider using psychotherapy, psychotropic drugs, or other similar methods of treatment are covered under this policy;
- Any hospital confinement of a newborn following the birth unless the newborn is sick or injured.

The definition of hospital does not include certain facilities. See your contract for details.

Childbirth Limitation

Policy may also include a childbirth limitation. If included, the policy will not pay benefits due to normal childbirth for any insured within the first nine months after the insured's coverage effective date. Complications of childbirth will still be covered.

Termination of employee coverage

If you choose to cancel your coverage under the policy, your coverage ends on the first of the month following the date you provide notification to your employer.

Otherwise, your coverage under the policy ends on the earliest of the:

- Date this policy is cancelled;
- Date you are no longer in an eligible group;
- Date your eligible group is no longer covered;
- Date of your death;
- Last day of the period for which you made any required contributions; or
- Last day you are in active employment. However, as long as premium is paid as required, coverage will continue if you elect to continue coverage under the Portability provision or in accordance with the layoff and leave of absence provisions of this policy.

Unum will provide coverage for a payable claim which occurs while you are covered under this policy.

THIS INSURANCE PROVIDES LIMITED BENEFITS.

This coverage is a supplement to health insurance. It is not a substitute for comprehensive health insurance and does not qualify as minimum essential health coverage.

This information is not intended to be a complete description of the insurance coverage available. The policy or its provisions may vary or be unavailable in some states. The policy has exclusions and limitations that may affect any benefits payable. For complete details of coverage and availability, please refer to policy form GHI-1 or contact your Unum representative.

Unum complies with all state civil union and domestic partner laws when applicable.

Underwritten by:

Unum Life Insurance Company of America, Portland, Maine

© 2018 Unum Group. All rights reserved. Unum is a registered trademark and marketing brand of Unum Group and its insuring subsidiaries.

If you have questions about this insurance call the Voluntary Benefits Service Center at 855-276-2109.